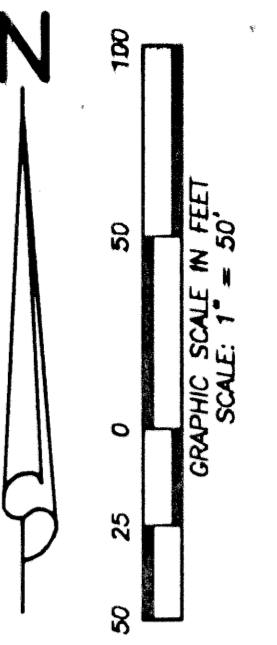


STATE OF FLORIDA
COUNTY OF PALM BEACH
THIS PLAT WAS FILED FOR
RECORD _____ DAY OF _____
AD, 2001 AND DULY RECORDED
IN PLAT BOOK _____ ON PAGES
_____ AND _____
DOROTHY H. WILKEN, CLERK
BY: _____, D.C.

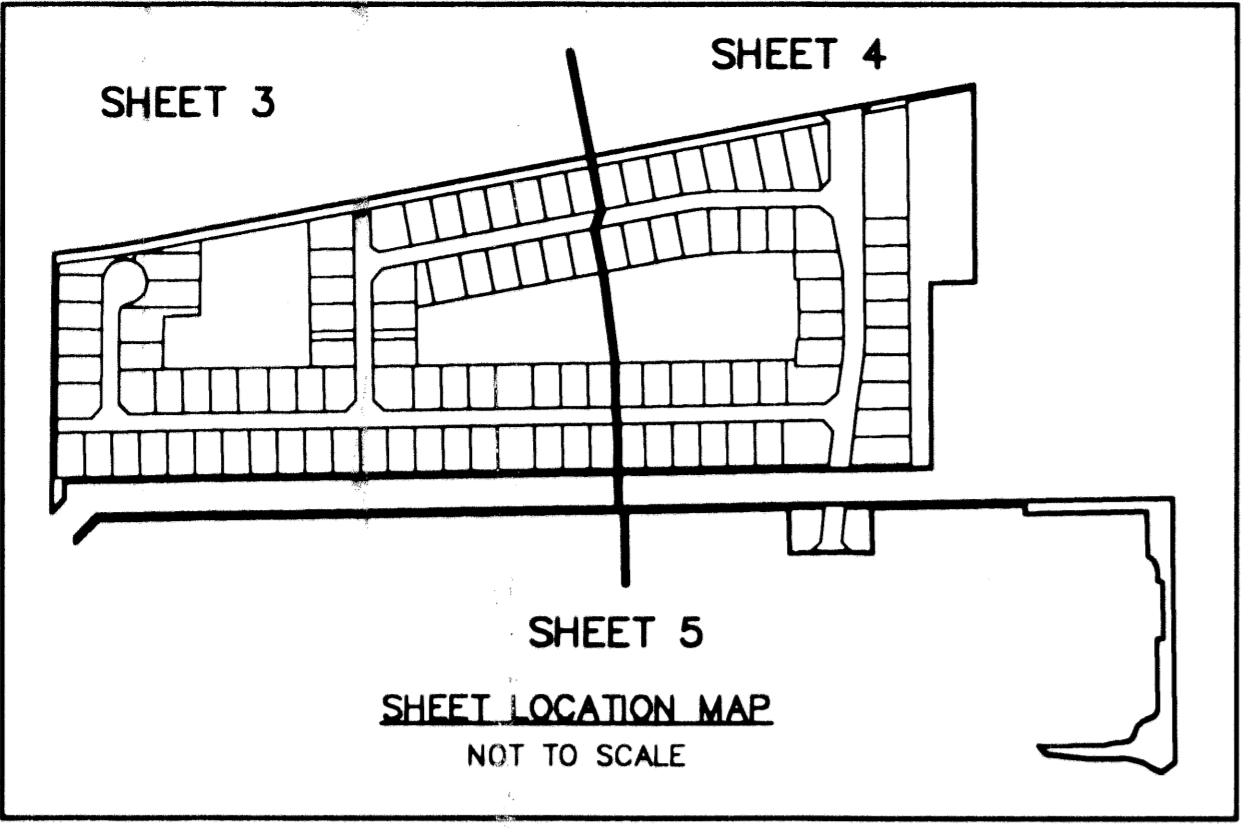


TUSCANY - PARCEL "E"

A PLANNED UNIT DEVELOPMENT BEING A PART OF CIBA GEIGY PUD

BEING A REPLAT OF TRACT "V", ABERDEEN-PLAT NO. 24, AS RECORDED IN PLAT BOOK 77, PAGES 174 THROUGH 180, INCLUSIVE, ALSO A PORTION OF PLAT NO. 1, LE CHALET (P.U.D.), AS RECORDED IN PLAT BOOK 31, PAGES 166 THROUGH 167, INCLUSIVE, AND TRACT "L-1", LOTS 96 THROUGH 98, INCLUSIVE, TUSCANY - PARCEL "D", AS RECORDED IN PLAT BOOK 84, PAGES 167 THROUGH 170, INCLUSIVE, ALL OF THE PUBLIC RECORDS OF PALM BEACH COUNTY, FLORIDA, LYING IN SECTIONS 15 AND 16, TOWNSHIP 45 SOUTH, RANGE 42 EAST, PALM BEACH COUNTY, FLORIDA.

MAY, 2001 SHEET 3 OF 5



ABERDEEN-PLAT 26 REPLAT
PB 82, PG 94

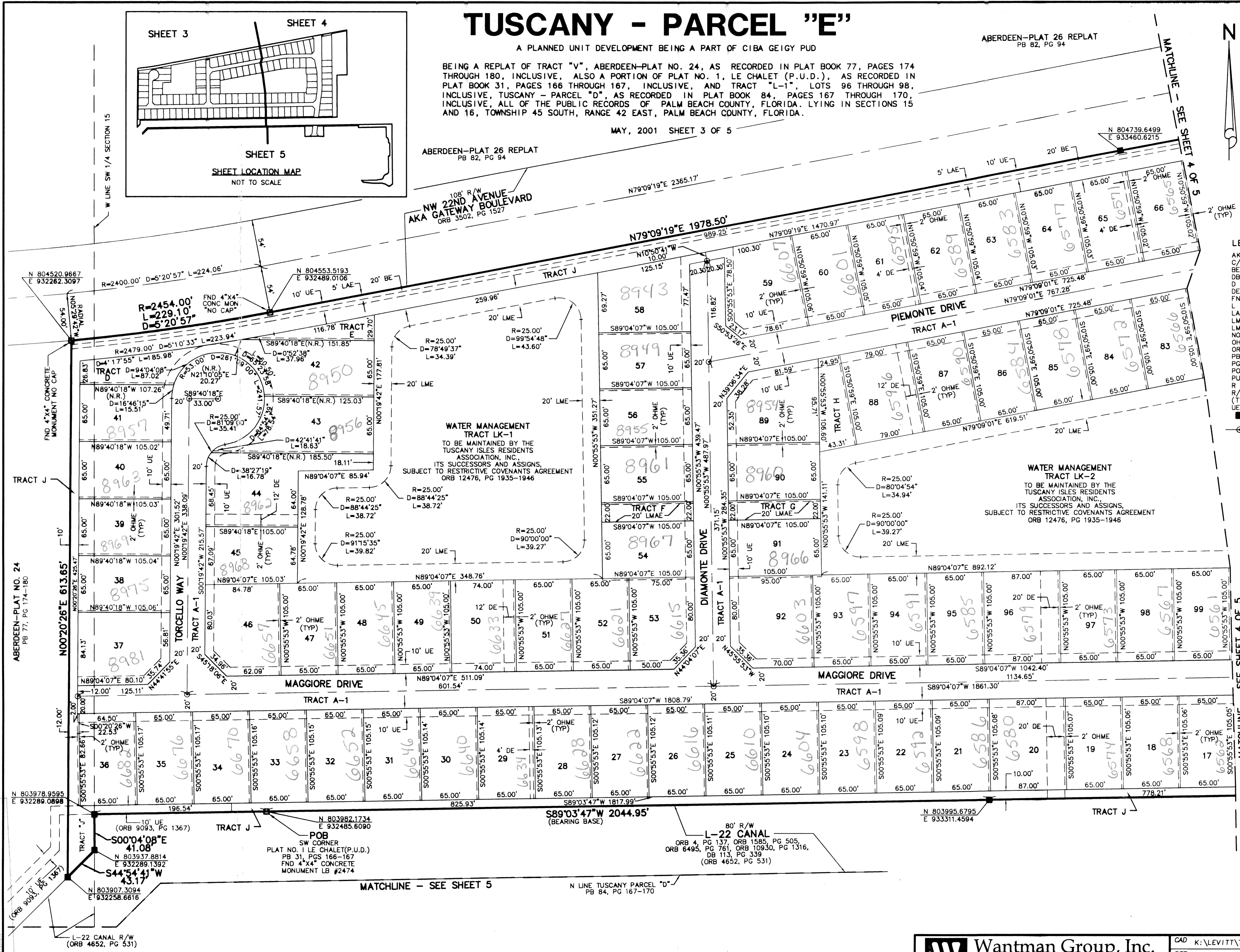
ABERDEEN-PLAT 26 REPLAT
PB 82, PG 94

108' R/W
NW 22ND AVENUE
AKA GATEWAY BOULEVARD
ORB 3502, PG 1527

MATCHLINE - SEE SHEET 4 OF 5

LEGEND:

- AKA = ALSO KNOWN AS
- C/L = CENTERLINE
- BE = BUFFER EASEMENT
- DB = DEED BOOK
- D = DELTA (CENTRAL) ANGLE
- DE = DRAINAGE EASEMENT
- FND = FOUND
- L = ARC LENGTH
- LAE = LIMITED ACCESS EASEMENT
- LMAE = LAKE MAINTENANCE ACCESS EASEMENT
- LME = LAKE MAINTENANCE EASEMENT
- NO. = NUMBER
- OHME = OVERHANG MAINTENANCE EASEMENT
- ORB = OFFICIAL RECORD BOOK
- PB = PLAT BOOK
- PS(S) = PAGE(S)
- POB = POINT OF BEGINNING
- PUD = PLANNED UNIT OF DEVELOPMENT
- R = RADIUS
- R/W = RIGHT-OF-WAY
- (TYP) = TYPICAL
- UE = UTILITY EASEMENT
- = SET 4"x4" CONCRETE MONUMENT
- = SET PERMANENT CONTROL POINT
- *LB#7055* = UNLESS OTHERWISE NOTED
- LB#7055* = SET PERMANENT CONTROL POINT



MATCHLINE - SEE SHEET 4 OF 5

ABERDEEN-PLAT NO. 24
PB 77, PG 174-180

POB
SW CORNER
PLAT NO. 1 LE CHALET (P.U.D.)
PB 31, PGS 166-167
FND 4"x4" CONCRETE
MONUMENT LB #2474

POB
SW CORNER
PLAT NO. 1 LE CHALET (P.U.D.)
PB 31, PGS 166-167
FND 4"x4" CONCRETE
MONUMENT LB #2474

80' R/W
L-22 CANAL
ORB 4, PG 137, ORB 1585, PG 505,
ORB 6495, PG 761, ORB 10930, PG 1316,
DB 113, PG 339
(ORB 4632, PG 531)

Wantman Group, Inc.
Engineering ♦ Surveying ♦ Mapping
901 NORTHPOINT PARKWAY, SUITE 204
WEST PALM BEACH, FL 33407
(561) 687-2220 phone (561) 687-1110 fax
CERT No. 6091 - LB No. 7055

CAD	K:\LEVI\TUSCANY\DWG\TUSCRP02		
REF	K:\LEVI\TUSCANY\DWG\TUSCMG01		
FLD	RP/AB	FB. 000 PG. 00	JOB 00-036A
OFF	AJP		DATE 12/05/00
CKD	RBP	SHEET 3 OF 5	DWG 00-020